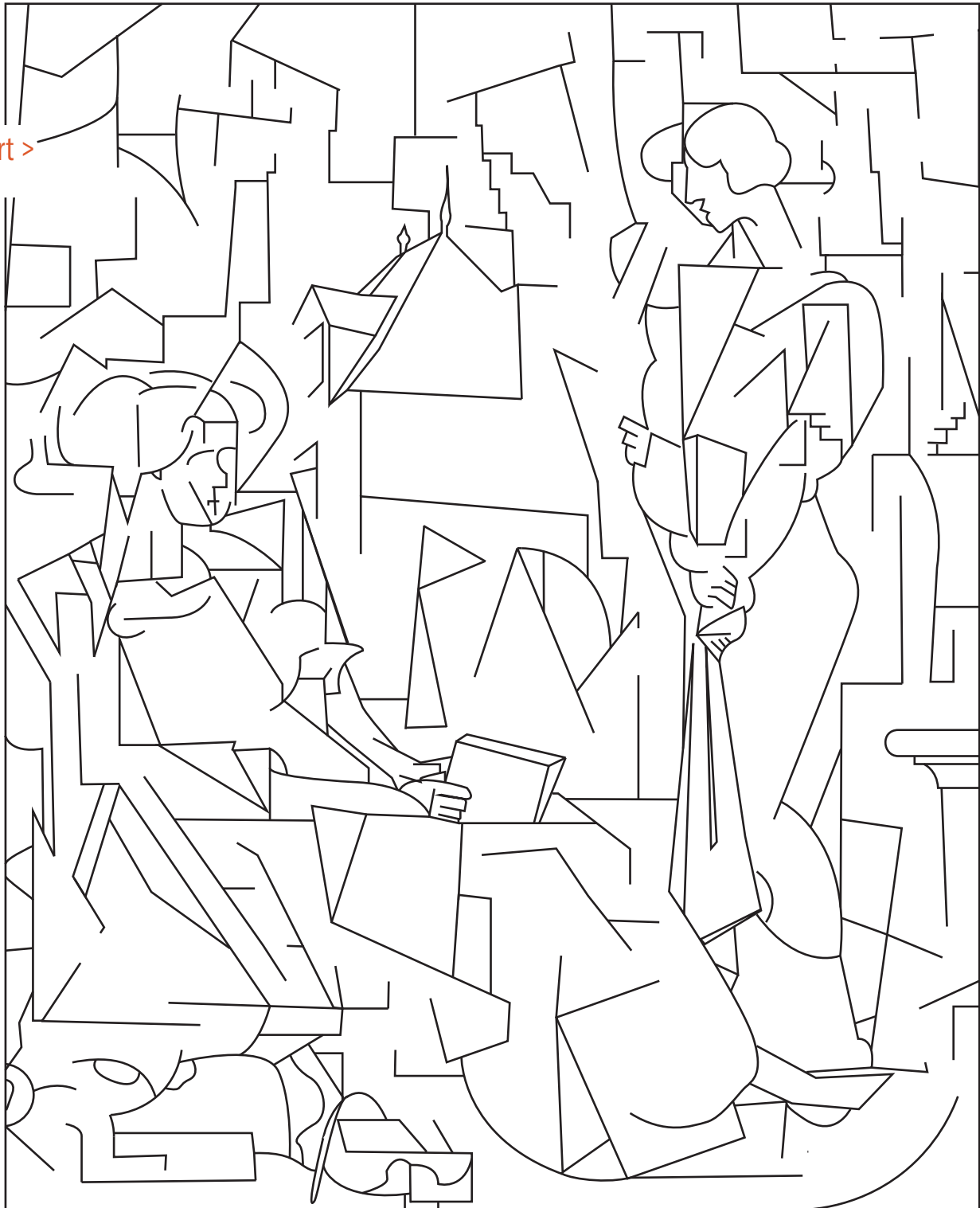


Complete the maze to help you find interesting elements in

## Diego Rivera's *Dos Mujeres*.

Start >



< Finish

Diego Rivera (Guanajuato, Mexico, 1886 - 1957, Mexico City, Mexico), *Dos Mujeres* (Two Women), 1914, oil on canvas, 77 3/4 x 63 1/2 in., Arkansas Museum of Fine Arts Foundation Collection: Gift of Abby Rockefeller Mauzé. 1955.010.



**What images did you recognize as you went through the maze?**

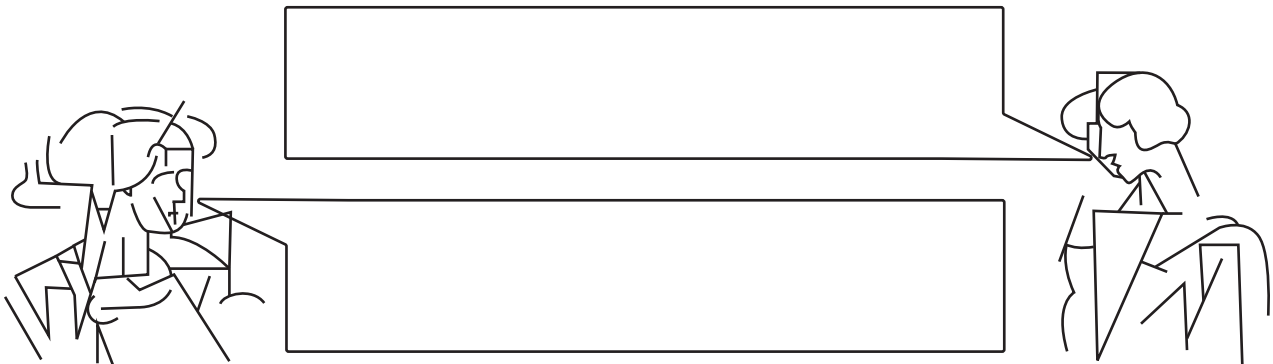
*Write them down.*

“Dos Mujeres,” is a painting by Mexican artist Diego Rivera. It is a portrait of two women the artist knew, having a conversation in front of a window view of Paris, France. A dog sleeps next to the women sitting in the chair.

*Did you find the two women, the dog, and the parts of buildings? Take another look at the painting and the maze. You might be surprised what you can see!*

**The painting is called “Dos Mujeres,” which is Spanish for “Two Women.”**

In the painting, the two women are having a conversation. *Fill in the speech bubbles with what you imagine they are talking about.*

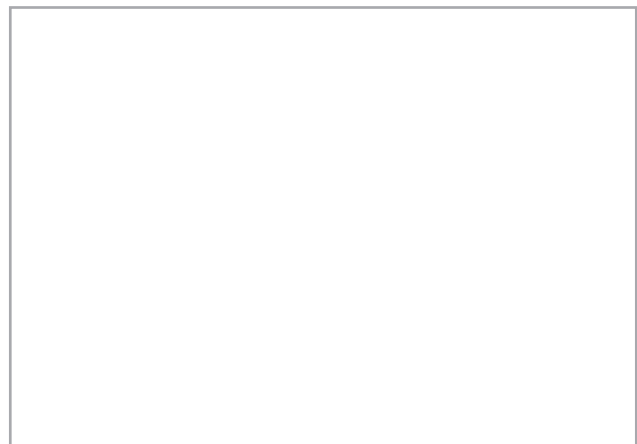


**Many artists, including Diego Rivera created paintings that showed objects and people at several angles at once. They used overlapping lines and basic shapes to create these images. This style of art is called Cubism, and was created in part by Pablo Picasso.**

Draw some of the shapes you see in the painting and maze:

Now it is your turn to be a cubist artist!

Combine different geometric shapes to create an image!



The shapes you found are most similar to which type of shape?  
*Circle your answer.*



Geometric shapes are made with straight lines and sides that can be counted.



Organic shapes are curvy with no sides and are usually found in nature.